

The Atlas Copco logo is located in the top left corner. It consists of the company name "Atlas Copco" in a blue, italicized serif font, centered between two horizontal blue bars. The background of the entire page is a dense field of various sizes and orientations of metallic self-piercing rivets, rendered in a blue-tinted 3D style.

Atlas Copco

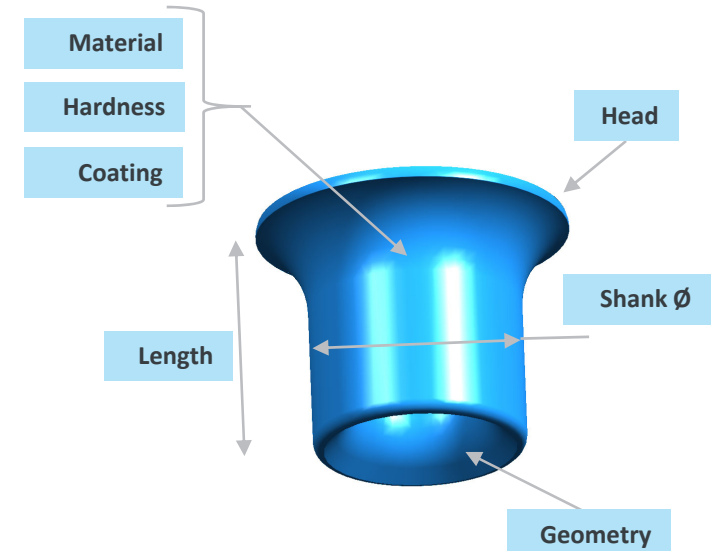
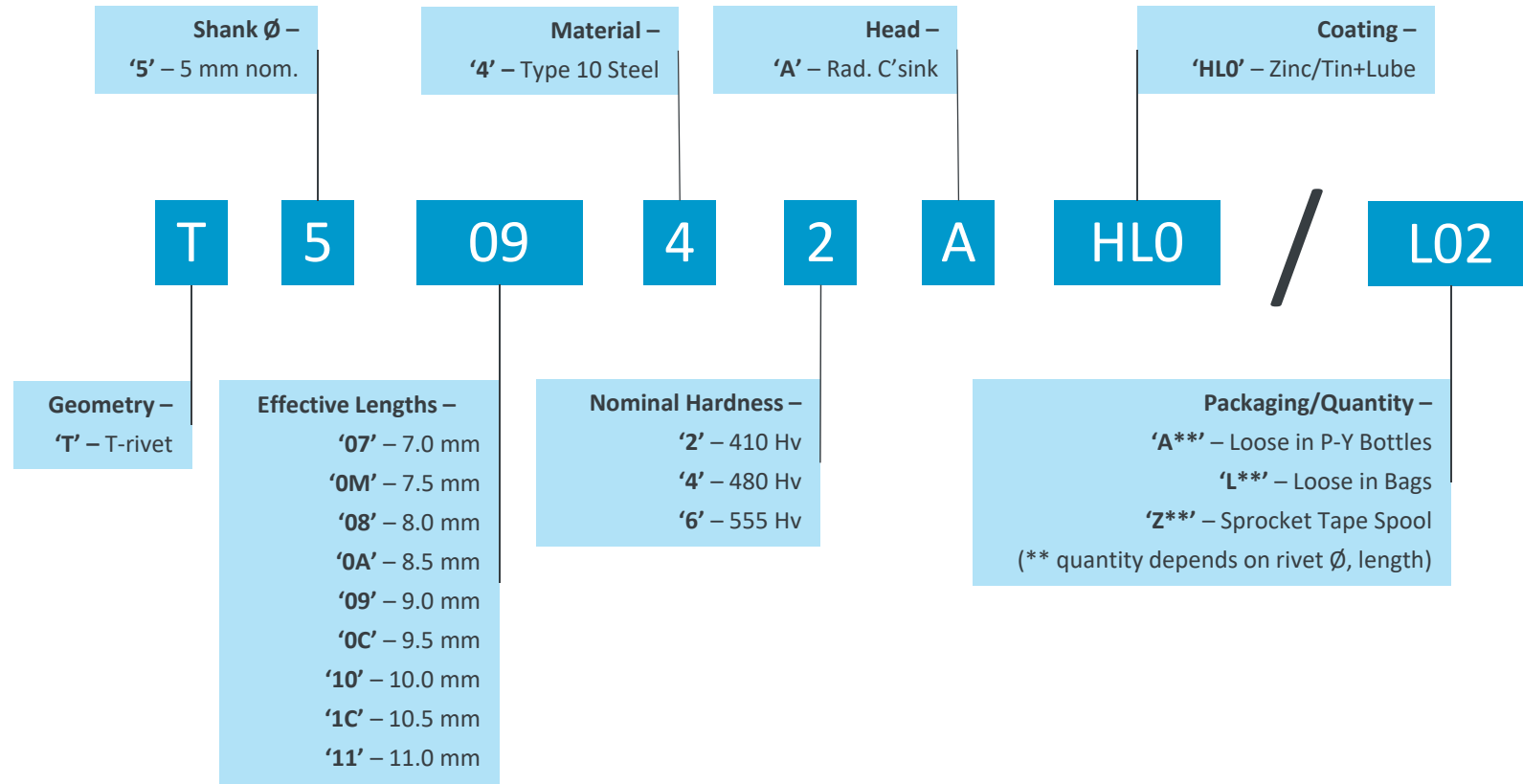
A technical drawing of a rivet is overlaid on the right side of the image. It shows a cross-section of the rivet with various dimensions and part numbers. The drawing is in a light blue color and includes labels such as "1350 (CA-3)", "1350 (CA-2)", "CCL13", and "Ø12".

Henrob rivet catalog

Details of the available part numbers for the
Henrob self-piercing rivets

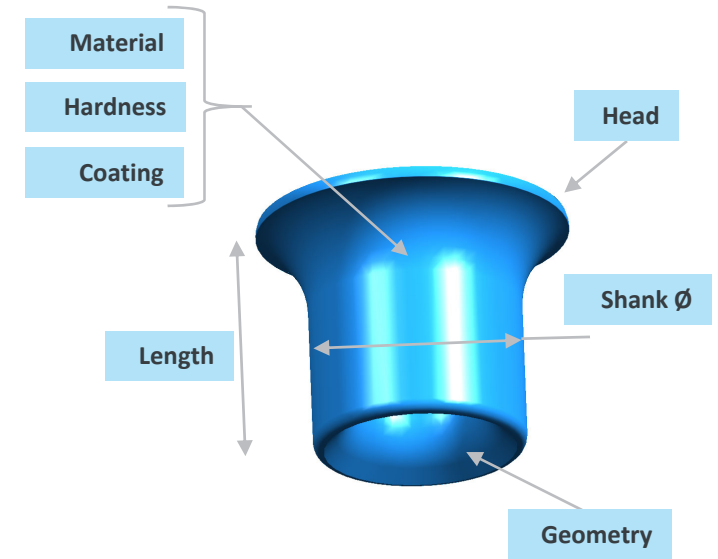
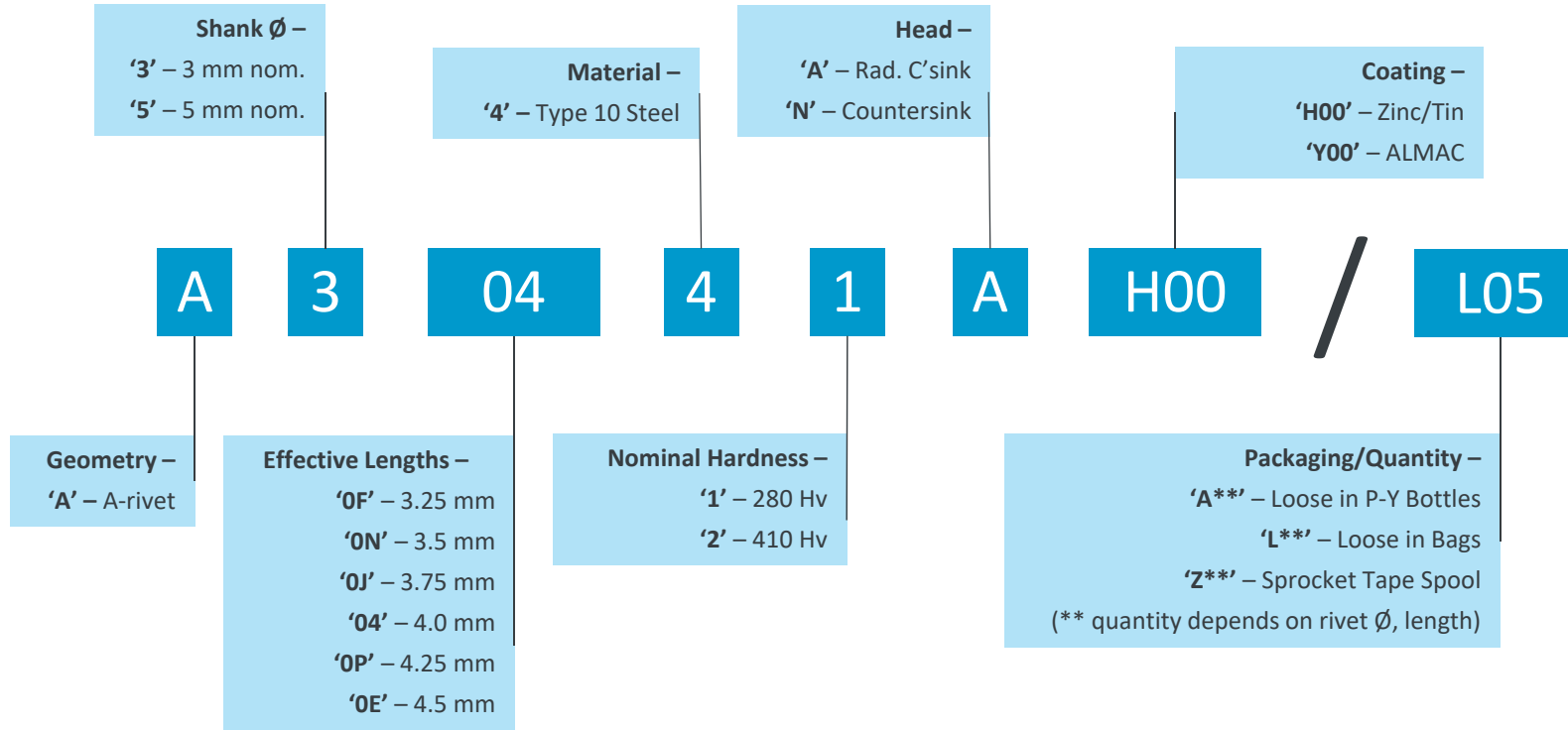
Henrob Rivet Catalog

T-Rivet part number build up



Henrob Rivet Catalog

A-Rivet part number build up

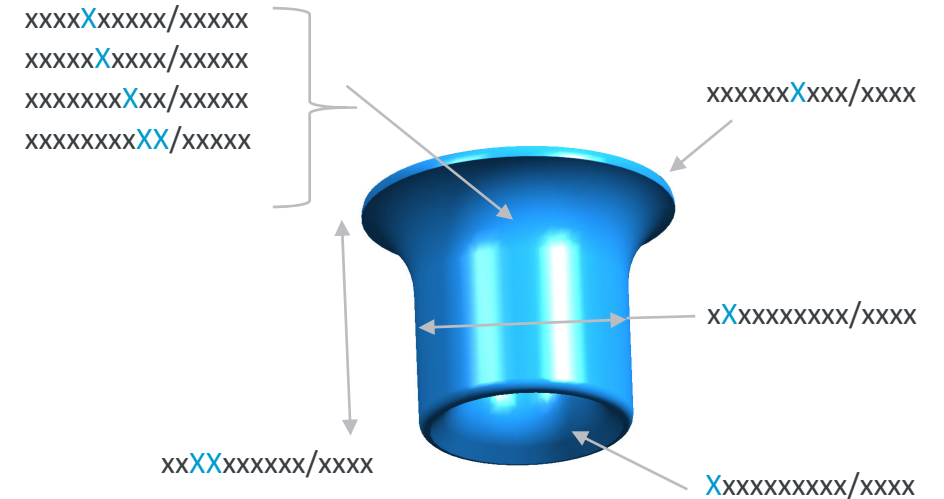


Henrob Rivet Catalog

Rivet part number build up

XXXXXXXXXX/XXXXX is the standard Henrob part numbering format for rivets

- XXXXXXXXXX/XXXXX – The rivet geometry
- xXXXXXXXXX/XXXXX – Nominal rivet shank diameter
- xxXXXXXXXXXX/XXXXX – Nominal rivet length*
- xxxxXXXXXX/XXXXX – Rivet material
- xxxxxXxxxx/XXXXX – Rivet hardness level
- xxxxxxXxxx/XXXXX – Rivet head style
- xxxxxxxXxx/XXXXX – Rivet base coat
- xxxxxxxXX/XXXXX – Rivet top coat (or lubricant)
- xxxxxxxxX/XXXXX – Rivet packaging style
- xxxxxxxxX/xXXxx – Rivet packaging quantity
- xxxxxxxxX/xxxXX – Rivet packaging customer specific



XXXXXXXXXX/XXXXX
XXXXXXXXXX/xXXxx
XXXXXXXXXX/xxxXX



Henrob rivet catalog

Rivet part number build up (example)

T50C44AHLO/L02J is a standard Henrob part number

Txxxxxxxx/xxxxx – T-Rivet geometry

x5xxxxxxxx/xxxxx – 5mm shank diameter

xx0Cxxxxxx/xxxxx – 9.5mm rivet length

xxxx4xxxxx/xxxxx – Boron steel material

xxxxx4xxxx/xxxxx – Level 4 hardness

xxxxxxAxxx/xxxxx – Radiused countersunk head

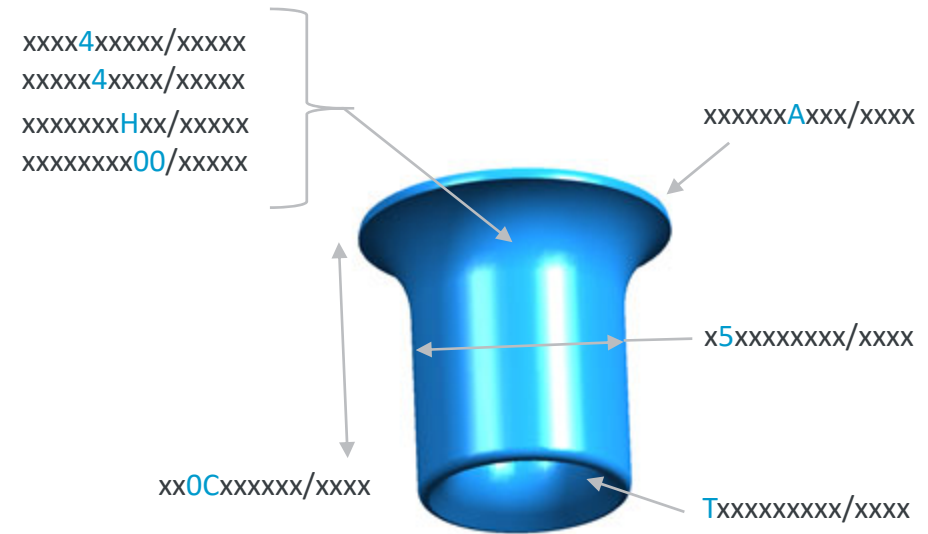
xxxxxxxHxx/xxxxx – Mechanical zinc/Tin base coat

xxxxxxx00/xxxxx – No top coat

xxxxxxxxx/Lxxx – Bagged rivets packaging

xxxxxxxxx/x02x – 2,000/bag packaging quantity

xxxxxxxxx/xxxJ – Customer specific packaging for customer



xxxxxxxxxx/Lxxxx
xxxxxxxxxx/x02xx
xxxxxxxxxx/xxxJ

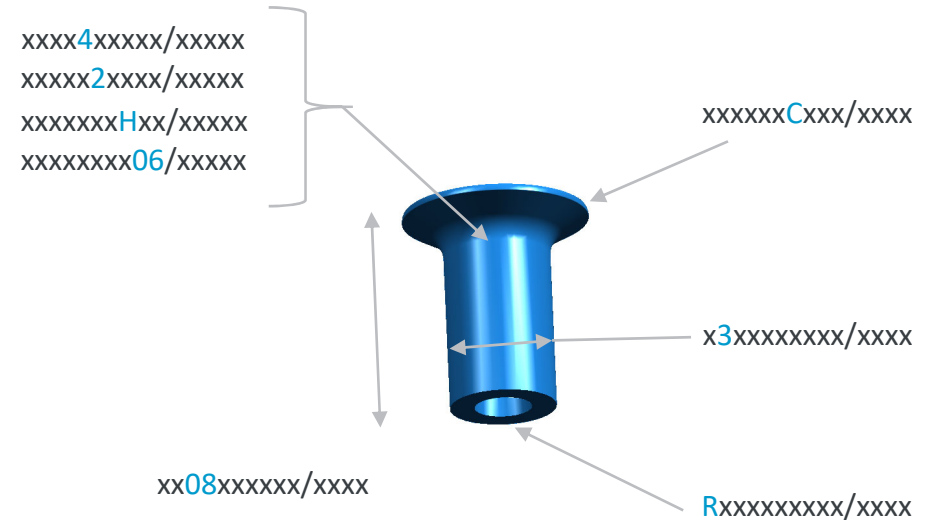


Henrob rivet catalog

Rivet part number build up (example)

R30842CH06/C05 is a standard Henrob part number

- Rxxxxxxxxx/xxxxx – R-Rivet geometry
- x3xxxxxxxx/xxxxx – 3mm shank diameter
- xx08xxxxxx/xxxxx – 8mm nominal length
- xxxx4xxxxx/xxxxx – Boron steel material
- xxxxx2xxxx/xxxxx – Level 2 hardness
- xxxxxxCxxx/xxxxx – Countersunk head
- xxxxxxxHxx/xxxxx – Mechanical zinc/Tin base coat
- xxxxxxx06/xxxxx – McDermid Tri-pass top coat
- xxxxxxxxxx/Cxxx – Plain-tape spool packaging
- xxxxxxxxxx/x05 – 5,000/spool packaging quantity
- xxxxxxxxxx/xxx.. – No customer specific packaging



xxxxxxxxxx/Xxxxx
xxxxxxxxxx/xXXxx
xxxxxxxxxx/xxxXX



Henrob rivet catalog

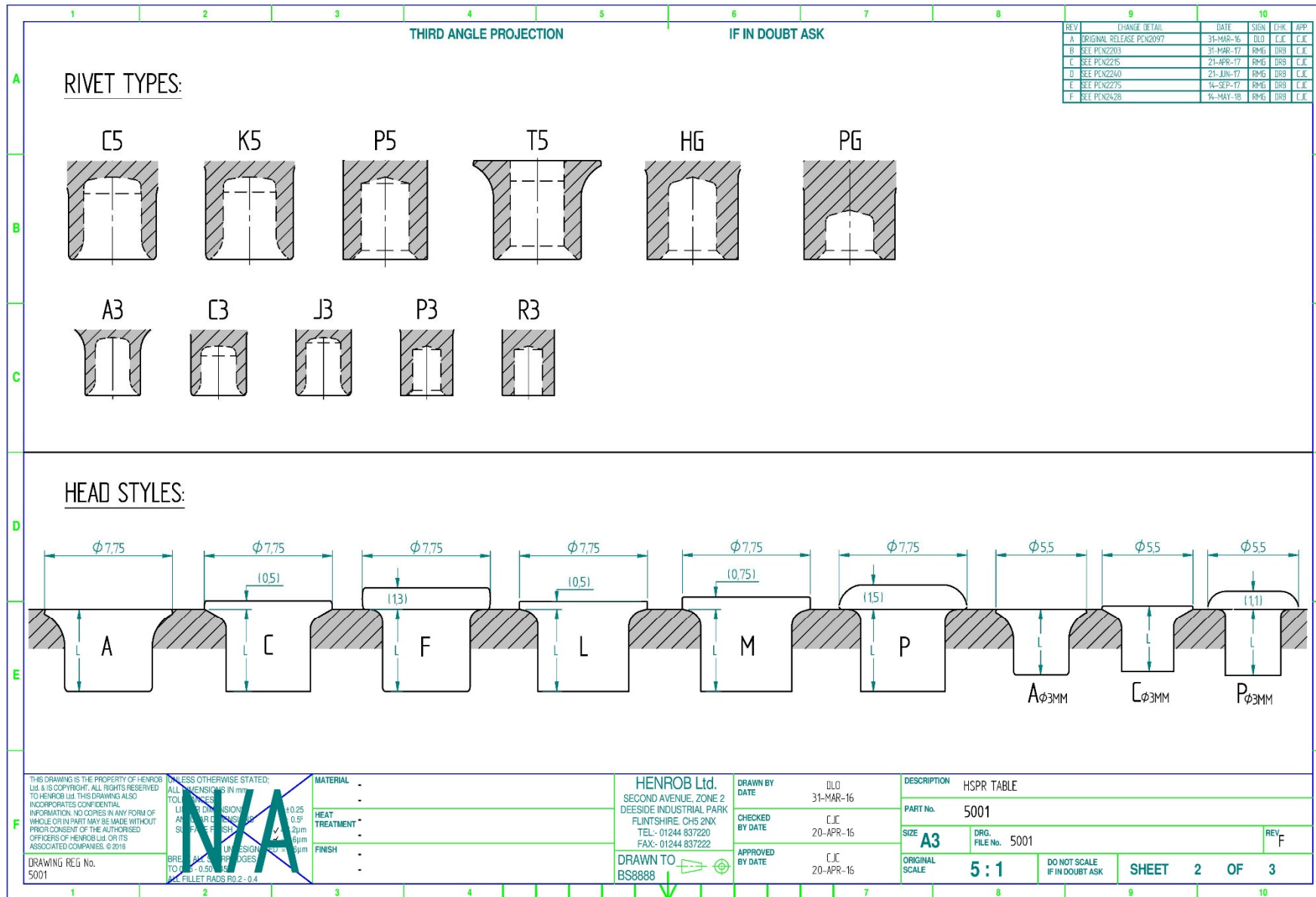
1	2		3			4				5				6				7				8				9				10																										
HSPR TABLE	THIRD ANGLE PROJECTION																IF IN DOUBT ASK																REV				CHANGE DETAIL				DATE				SIGN				CHK				APP			
																																	A				B				C				D				E				F			
																																	A				B				C				D				E				F			
RIVET TYPE	'L' EFFECTIVE LENGTH (mm)																MATERIAL & HARDNESS						HEAD STYLE						COATING																											
XXxxxxxxx	xxXXxxxxxxx																xxxxXXxxxx						xxxxxxxXxxx						xxxxxxxXXX																											
																	1	G	H	2	3	4	5	6	A	C	F	L	P	M	H00	H06	M03	Y00																						
3.25	3.5	3.75	4.0	4.25	4.5	5.0	5.5	6.0	6.5	7.0	7.5	8.0	8.5	9.0	9.5	10.0	10.5	11.0	11.5	12.0	12.5	13.0	13.5	14.0	41	4G	4H	42	43	44	45	46	A	-	-	-	-	-	H00	H06	M03	Y00														
A3	OF	ON	OH	O4	OP	OE	-	-	-	-	-	-	-	-	-	-	-	-	-	-	-	-	-	-	41	4G	4H	42	43	44	45	46	A	-	-	-	-	-	H00	H06	M03	Y00														
C3	OF	ON	-	O4	-	OE	-	-	-	-	-	-	-	-	-	-	-	-	-	-	-	-	-	-	41	4G	4H	42	43	44	45	46	A	-	-	-	P	-	H00	H06	M03	Y00														
J3	-	-	-	-	-	05	0G	06	0D	07	-	08	-	-	-	-	-	-	-	-	-	-	-	-	41	4G	4H	42	43	44	45	46	A	-	-	-	P	-	H00	H06	M03	Y00														
P3	-	-	-	O4	-	OE	05	0G	06	0D	07	0M	08	-	09	-	10	-	-	-	-	-	-	-	-	-	42	43	44	45	46	-	C	-	-	P	-	H00	H06	M03	Y00															
R3	-	-	-	O4	-	OE	05	0G	06	0D	07	0M	08	-	09	-	10	-	-	-	-	-	13	-	-	-	42	43	44	45	46	-	C	F	-	P	-	H00	H06	M03	Y00															
C5	-	-	-	O4	-	OE	05	0G	06	0D	-	-	-	-	-	-	-	-	-	-	-	-	-	-	41	4G	4H	42	43	44	45	46	A	C	-	-	P	-	H00	H06	M03	Y00														
K5	-	-	-	-	-	OE	05	0G	06	0D	07	0M	08	0A	09	0C	10	1C	11	1K	12	1D	13	1E	14	41	4G	4H	42	43	44	45	46	A	-	F	-	P	-	H00	H06	M03	Y00													
P5	-	-	-	-	-	05	0G	06	0D	07	0M	08	0A	09	0C	10	1C	11	1K	12	1D	13	1E	14	41	4G	4H	42	43	44	45	46	-	C	-	-	P	-	H00	H06	M03	Y00														
T5	-	-	-	-	-	OE	05	0G	06	0D	07	0M	08	0A	09	0C	10	1C	11	1K	12	1D	13	1E	14	41	4G	4H	42	43	44	45	46	A	-	-	-	-	-	H10	-	-	-													
HG	-	-	-	-	-	05	0G	06	0D	07	0M	08	0A	09	0C	10	1C	11	-	-	-	-	-	-	-	-	4G	4H	42	43	44	45	46	-	-	-	-	-	M	H00	H06	M03	Y00													
PG	-	-	-	-	-	05	0G	06	0D	07	0M	08	0A	09	0C	10	1C	11	-	-	-	-	-	-	-	-	-	42	43	44	45	46	-	-	-	F	L	P	-	H00	H06	M03	Y00													

*BOLD LETTERING INDICATES RIVET COMBINATION HAS BEEN PRODUCED AS PER THE DATE OF THIS DRAWINGS CURRENT REVISION

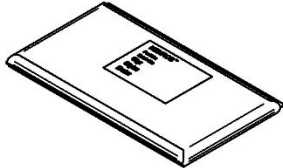
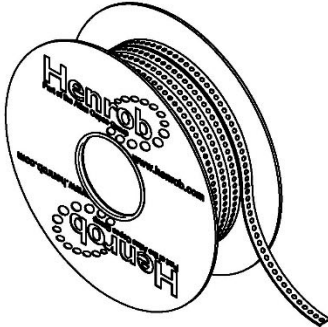
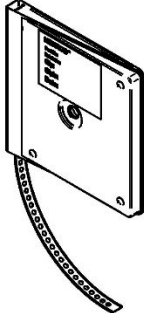
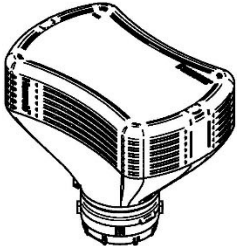
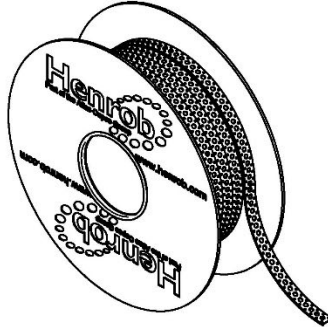
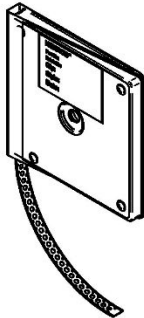
THIS DRAWING IS THE PROPERTY OF HENROB Ltd. & IS COPYRIGHT. ALL RIGHTS RESERVED TO HENROB Ltd. THIS DRAWING ALSO INCORPORATES CONFIDENTIAL INFORMATION. NO COPIES IN ANY FORM OF WHOLE OR IN PART MAY BE MADE WITHOUT PRIOR CONSENT OF THE AUTHORISED OFFICERS OF HENROB Ltd. OR ITS ASSOCIATED COMPANIES. © 2015	UNLESS OTHERWISE STATED: ALL DIMENSIONS IN mm TOLERANCES: UNLESS OTHERWISE STATED: ±0.25	MATERIAL	HENROB Ltd. SECOND AVENUE, ZONE 2 DEESIDE INDUSTRIAL PARK FLINTSHIRE, CH5 2NX TEL:- 01244 837220 FAX:- 01244 837222	DRAWN BY DATE DLD 31-MAR-16	DESCRIPTION HSPR TABLE
DRAWING REG No. 5001	HEAT TREATMENT	FINISH	DRAWN TO BS8888	CHECKED BY DATE CJC 20-APR-16	PART No. 5001
				APPROVED BY DATE CJC 20-APR-16	SIZE A3
					DRG. FILE No. 5001
					ORIGINAL SCALE 5:1
					DO NOT SCALE IF IN DOUBT ASK
					SHEET 1 OF 3
					REV F



Henrob rivet catalog

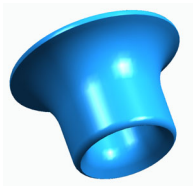
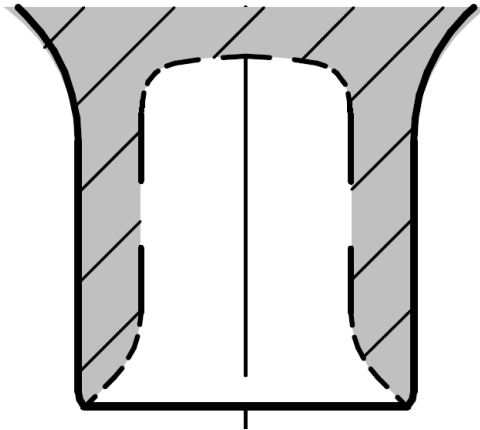


Henrob rivet catalog

THIRD ANGLE PROJECTION			IF IN DOUBT ASK																																													
					<table border="1"> <thead> <tr> <th>REV</th> <th>CHANGE DETAIL</th> <th>DATE</th> <th>SIGN</th> <th>CHK</th> <th>APP</th> </tr> </thead> <tbody> <tr> <td>A</td> <td>ORIGINAL RELEASE</td> <td>31-MAR-16</td> <td>DLD</td> <td>CJC</td> <td>CJC</td> </tr> <tr> <td>B</td> <td>SEE PEN2203</td> <td>31-MAR-17</td> <td>RMG</td> <td>DRB</td> <td>CJC</td> </tr> <tr> <td>C</td> <td>SEE PEN2216</td> <td>21-APR-17</td> <td>RMG</td> <td>DRB</td> <td>CJC</td> </tr> <tr> <td>D</td> <td>SEE PEN2240</td> <td>21-JUN-17</td> <td>RMG</td> <td>DRB</td> <td>CJC</td> </tr> <tr> <td>E</td> <td>SEE PEN2275</td> <td>14-SEP-17</td> <td>RMG</td> <td>DRB</td> <td>CJC</td> </tr> <tr> <td>F</td> <td>SEE PEN2428</td> <td>14-MAY-18</td> <td>RMG</td> <td>DRB</td> <td>CJC</td> </tr> </tbody> </table>		REV	CHANGE DETAIL	DATE	SIGN	CHK	APP	A	ORIGINAL RELEASE	31-MAR-16	DLD	CJC	CJC	B	SEE PEN2203	31-MAR-17	RMG	DRB	CJC	C	SEE PEN2216	21-APR-17	RMG	DRB	CJC	D	SEE PEN2240	21-JUN-17	RMG	DRB	CJC	E	SEE PEN2275	14-SEP-17	RMG	DRB	CJC	F	SEE PEN2428	14-MAY-18	RMG	DRB	CJC
REV	CHANGE DETAIL	DATE	SIGN	CHK	APP																																											
A	ORIGINAL RELEASE	31-MAR-16	DLD	CJC	CJC																																											
B	SEE PEN2203	31-MAR-17	RMG	DRB	CJC																																											
C	SEE PEN2216	21-APR-17	RMG	DRB	CJC																																											
D	SEE PEN2240	21-JUN-17	RMG	DRB	CJC																																											
E	SEE PEN2275	14-SEP-17	RMG	DRB	CJC																																											
F	SEE PEN2428	14-MAY-18	RMG	DRB	CJC																																											
 <p>/LXX LOOSE IN BAGS 15</p>		 <p>/CXX RIVET CATCHER SPOOL /MXX INDEX WHEEL SPOOL 15</p>		 <p>/BXX RIVET CATCHER CASSETTE /QXX INDEX WHEEL SPOOL 15</p>																																												
 <p>/AXX LOOSE IN BOTTLES 15</p>		 <p>/ZXX SPROCKET SPOOL 15</p>		 <p>/HXX SPROCKET CASSETTE 15</p>																																												
<p>THIS DRAWING IS THE PROPERTY OF HENROB Ltd. & IS COPYRIGHT. ALL RIGHTS RESERVED TO HENROB Ltd. THIS DRAWING ALSO INCORPORATES CONFIDENTIAL INFORMATION. NO COPIES IN ANY FORM OF WHOLE OR IN PART MAY BE MADE WITHOUT PRIOR CONSENT OF THE AUTHORISED OFFICERS OF HENROB Ltd OR ITS ASSOCIATED COMPANIES. © 2016</p> <p>DRAWING REG No. 5001</p>		<p>UNLESS OTHERWISE STATED: ALL DIMENSIONS IN mm</p> <p>N/A</p> <p>LINE WEIGHT DIMENSION: +0.25 ANGLE OR RADIUS: 0.5° SURFACE FINISH: 12µm BREATHER DESIGN: 12µm TOLERANCE: 0.50 FILLET RADS R0.2 - 0.4</p>		<p>MATERIAL: - HEAT TREATMENT: - FINISH: -</p>																																												
<p>HENROB Ltd. SECOND AVENUE, ZONE 2 DEESIDE INDUSTRIAL PARK FLINTSHIRE, CH5 2NX TEL.: 01244 837220 FAX: 01244 837222</p> <p>DRAWN TO BS8888</p>			<p>DRAWN BY DATE: DLD 31-MAR-16 CHECKED BY DATE: CJC 20-APR-16 APPROVED BY DATE: CJC 20-APR-16</p>		<p>DESCRIPTION: HSPR TABLE PART No. 5001 SIZE: A3 DRG. FILE No. 5001 ORIGINAL SCALE: 5:1 DO NOT SCALE IF IN DOUBT ASK</p>																																											
			<p>SHEET 3 OF 3</p>		<p>REV F</p>																																											

Henrob rivet catalog

A3xxxxxxxx/xxxx

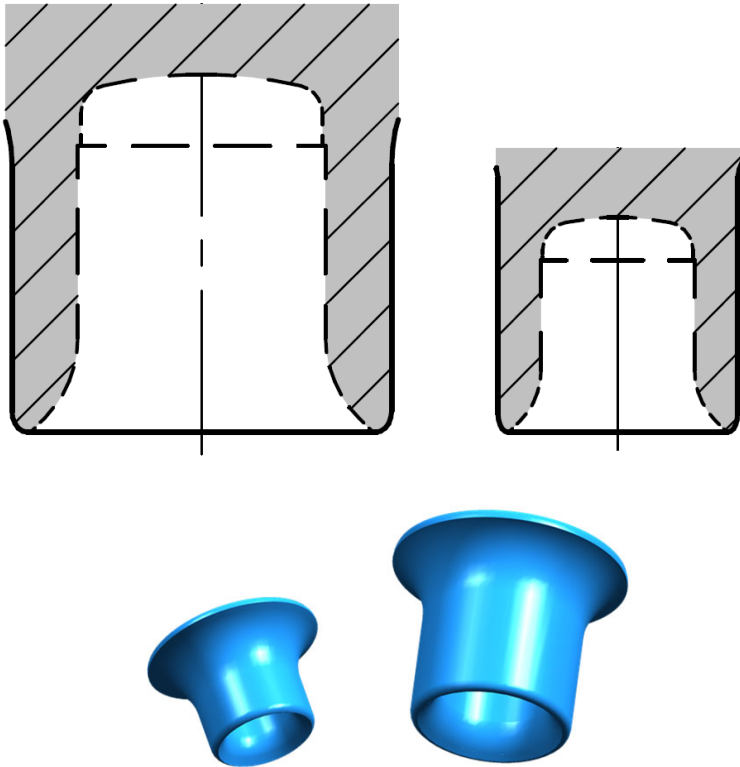


Applications	Automotive; Thinner Al. alloys and mild steel sheets
Diameters	3mm and 5mm
Lengths	Ø 3mm: 3.25 mm up to 4.25 mm in 0.25 mm increments Ø 5mm: 4mm up to 7mm in 0.5mm increments
Materials	Steel type "4" only
Hardnesses	Hardness Levels "1" and "2"
Head Styles	"A" and "N" head
Coatings	"H00" – Zinc Tin "Y00" – ALMAC
Packaging	Tape Feed / Loose Feed available – compatible with standard Henrob loose and tape feed systems

Please note – not all hardness/head styles/coatings available in every length/diameter combination – contact Atlas Copco for more detail

Henrob rivet catalog

C5 & C3xxxxxxxx/xxxx

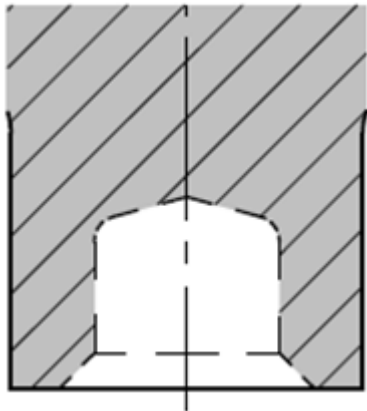


Applications	Automotive/Transport/General Industry; All-aluminum and mixed material joints including milder steels up to some grades of higher strength steels
Diameters	5mm, 3mm
Lengths	(3 mm \varnothing) – 3.5-4 mm in 0.5 mm increments (5 mm \varnothing) – 4-6.5 mm in 0.5 mm increments
Materials	Steel type “4” only
Hardnesses	All Hardness Levels 1 to 6 inclusive
Head Styles	“A” and “P” heads
Coatings	“H00” – Zinc Tin “Y00” – ALMAC
Packaging	Tape Feed / Loose Feed

Please note – not all hardness/head styles/coatings available in every length/diameter combination – contact Atlas Copco for more detail

Henrob rivet catalog

HGxxxxxxxx/xxxxx

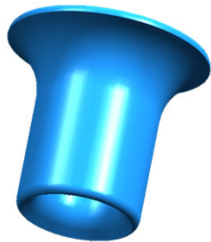
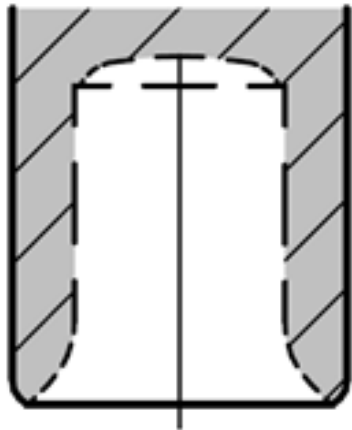


Applications	General Industry; All-steel and mixed material joints including milder steels up to some grades of higher strength steels
Diameters	5.5 mm,
Lengths	5-8 mm in 0.5 mm increments
Materials	Steel type "4" only
Hardnesses	Hardness Levels 4 and 6
Head Styles	"M" head
Coatings	"H00" – Zinc Tin "Y00" – ALMAC
Packaging	Tape Feed / Loose Feed

Please note – not all hardness/head styles/coatings available in every length/diameter combination – contact Atlas Copco for more detail

Henrob rivet catalog

J3xxxxxxxx/xxxx

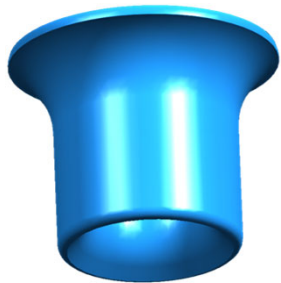
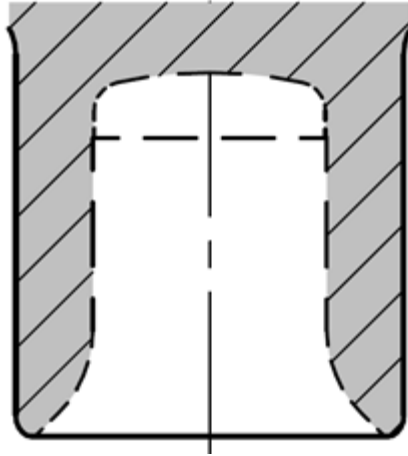


Applications	Automotive/Transport/General Industry; All-aluminum and mixed material joints including milder steels up to some grades of higher strength steels
Diameters	3 mm
Lengths	5 and 6 mm
Materials	Steel type "4" only
Hardnesses	All Hardness Levels 1 to 6 inclusive
Head Styles	"A" head "P" head
Coatings	"H00" – Zinc Tin, "Y00" – ALMAC
Packaging	Tape Feed / Loose Feed

Please note – not all hardness/head styles/coatings available in every length/diameter combination – contact Atlas Copco for more detail

Henrob rivet catalog

K5xxxxxxxx/xxxx

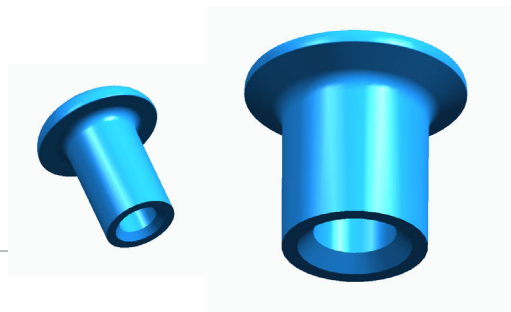
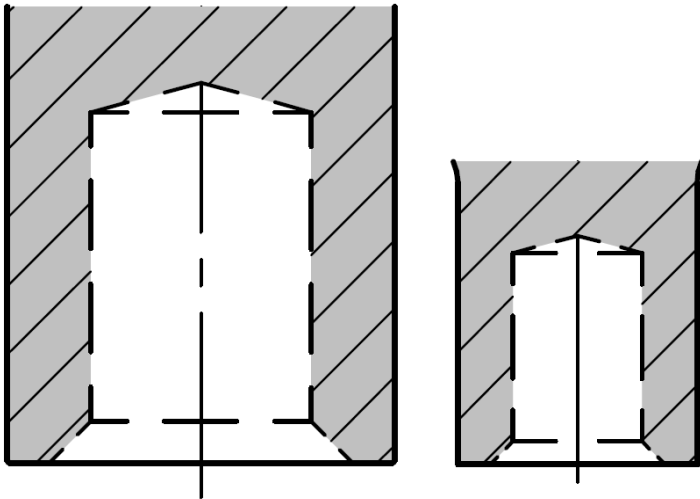


Applications	Automotive/Transport/General Industry; All-aluminum and mixed material joints including milder steels up to some grades of higher strength steels
Diameters	5 mm
Lengths	7-12 mm in 0.5 mm increments
Materials	Steel type "4" only
Hardnesses	All Hardness Levels 1 to 6 inclusive
Head Styles	"A" head, "F" head "P" head
Coatings	"H00" – Zinc Tin, "Z00" – ALMAC
Packaging	Tape Feed / Loose Feed

Please note – not all hardness/head styles/coatings available in every length/diameter combination – contact Atlas Copco for more detail

Henrob rivet catalog

P5 & P3xxxxxxxx/xxxx



Applications Automotive/Transport/General Industry; All-steel and mixed material joints including milder steels up to some grades of higher strength steels

Diameters 5 mm and 3 mm,

Lengths (P3) – 4-8 mm in 1 mm increments
(P5) – 5-14 mm in 1 mm increments

Materials Steel type “4” only

Hardnesses All Hardness Levels 1 to 6 inclusive

Head Styles “C” head
“P” head

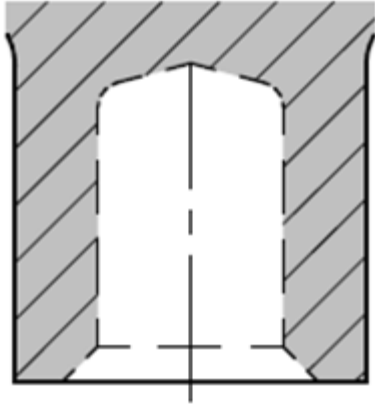
Coatings “H00” – Zinc Tin
“Y00” – ALMAC

Packaging Tape Feed / Loose Feed

Please note – not all hardness/head styles/coatings available in every length/diameter combination – contact Atlas Copco for more detail

Henrob rivet catalog

PGxxxxxxxx/xxxxx

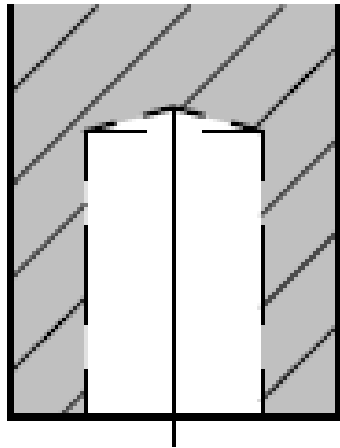


Applications	General Industry; All-steel and mixed material joints including milder steels up to some grades of HSS
Diameters	5.5 mm,
Lengths	5-8 mm in 1 mm increments
Materials	Steel type "4" only
Hardnesses	Hardness Levels 4 and 6
Head Styles	"F" head, "L" Head, "P" head
Coatings	"H00" – Zinc Tin "Y00" – ALMAC
Packaging	Tape Feed / Loose Feed

Please note – not all hardness/head styles/coatings available in every length/diameter combination – contact Atlas Copco for more detail

Henrob rivet catalog

R3xxxxxxxx/xxxxx



Applications

General Industry; All-steel and mixed material joints including milder steels up to some gauges of HSS

Diameters

3 mm,

Lengths

5-8 mm in 1mm increments

Materials

Steel type "4" only

Hardnesses

All Hardness Levels 2 to 6 inclusive

Head Styles

"C" head, "F" head,
"P" head

Coatings

"H00" – Zinc Tin
"Z00" – ALMAC

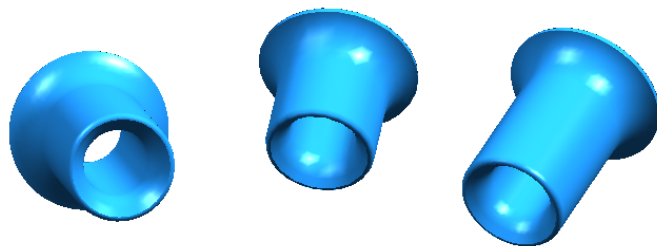
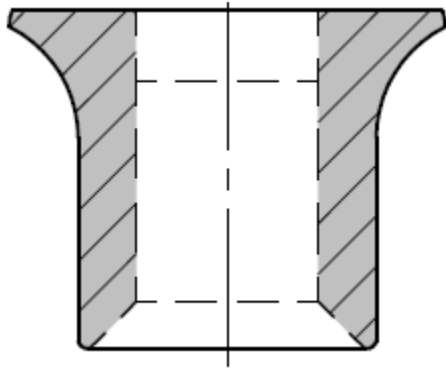
Packaging

Tape Feed

Please note – not all hardness/head styles/coatings available in every length/diameter combination – contact Atlas Copco for more detail

Henrob rivet catalog

T5xxxxxxxx/xxxxx



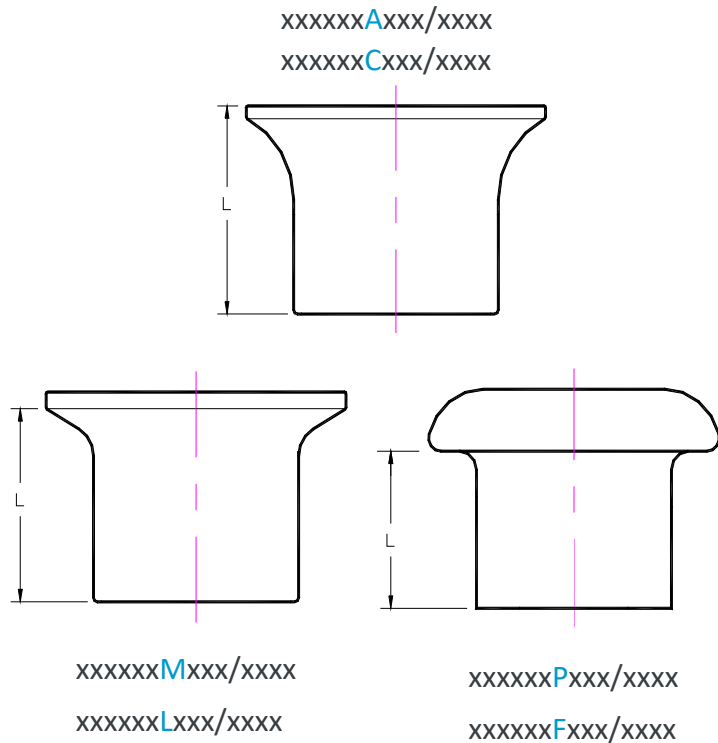
Applications	Automotive; Aluminum alloys with higher-yield, lower-ductility
Diameters	5 mm
Lengths	7 mm upto 14 mm in 0.5 mm increments
Materials	Steel type "4" only
Hardnesses	Hardness Levels "2", "4" and "6"
Head Styles	"A" head style only, full radius countersink
Coatings	"HLO" – Zinc Tin base with Lubricant
Packaging	Tape Feed / Loose Feed available – compatible with standard Henrob loose and tape feed systems

Please note – not all hardness/head styles/coatings available in every length/diameter combination – contact Atlas Copco for more detail

Henrob rivet catalog

Detail – Rivet lengths

xxXXxxxxxx/xxxxx – Nominal rivet length, L



Code	Length, L (mm)
0F	3.25
0N	3.5
0J	3.75
04	4.0
0P	4.25
0E	4.5
0B	4.75
05	5.0
0G	5.5
06	6.0
0D	6.5
07	7.0
0M	7.5
08	8.0
0A	8.5

Code	Length, L (mm)
09	9.0
0C	9.5
10	10.0
1C	10.5
11	11.0
1K	11.5
12	12.0
1D	12.5
13	13.0
1E	13.5
14	14.0
15	15.0
16	16.0
18	18.0
19	19.0

Henrob rivet catalog

Detail – Rivet materials/hardness levels

xxxxXXxxxx/xxxxx – Material and Material Hardness

Code	Material
4	Boron steel to BS EN 10263:2001 36Mn B4 Modified

Code	Nominal Hardness (Hv)
1	255-305
G	290-350
H	330-390
2	380-440
3	420-480
4	450-510
5	480-540
6	530-580

Henrob rivet catalog

Detail – Rivet base / top coatings

xxxxxxxXXX/xxxxx – Base / Top Coating...

Code	Base Coating
H	Mechanical Zinc & Tin plating (70% Zinc/30% Tin) Mixed Coating
M	Mechanical Zinc plating
W	Electroplated Zinc Nickel
Y	Mechanical ALMAC without de-embrittlement

Code	Top Coating Finish
00	Unpassivated/No finish
03	Clear passivate (Trivalent)
06	Passivate with MacDermid TriPass ELV 1500LT
L0	No passivate, lubricated with MacDermid TNT08
LA	Clear/Blue Trivalent Passivate, Lubricated

Henrob rivet catalog

Detail – packaging and quantity

xxxxxxxxx/XXXXX – packaging & quantity/pack

Code	Qty/Packaging
A	Loose In Bottles
B	Collated In Cassette, Plain Tape
C	Collated On Spool, Plain Tape
G	Loose In Bag, German Label
H	Collated In Cassette, Sprocket Tape
L	Loose In Bag, English Label
M	Collated On Spool, IWL System
Q	Collated In Cassette, IWL System
X	Collation On Spool, Sprocket Tape
Z	Collated On Spool, Sprocket Tape

Code	Qty/Packaging
A0	500
01	1,000
A1	1,500
02	2,000
A2	2,500
03	3,000
04	4,000
A4	4,500
05	5,000
07	7,000
08	8,000
10	10,000
12	12,000
13	13,000
14	14,000
AA	590
AB	420
AC	720

Code	Qty/Packaging
AD	375
AE	335
AF	330
AG	250
AH	300
AJ	220
AK	550
AL	460
AM	410
AN	350
AP	240
AQ	400
AS	500
AT	800
AV	200
AW	180
AX	170
AY	145

Henrob rivet catalog

Specifications – Packaging type and quantity in packaging – by rivet size

Rivet Size	Rivet Head Style	Qty. in Cassette	Qty. On Std. Spool	Qty. in Bag	Qty. in Bottle
3Ø, 4L	A	800	10,000	5,000	-
3Ø, 5L	A	590	10,000	5,000	-
5Ø, 4L	A	500	5,000	2,000	-
5Ø, 5L	A, C	400	5,000	2,000	14,000
5Ø, 5.5L	A, C	400	5,000	2,000	-
5Ø, 6L	A, C	335	5,000	2,000	13,000
5Ø, 6.5L	A, C, (P)	335, (300)	5,000	2,000	-
5Ø, 7L	A	300	5,000	2,000	10,000
5Ø, 7.5L	A	300	5,000	2,000	-
5Ø, 8L	A, (P)	300, (250)	5,000	2,000	-
5Ø, 8.5L	A	250	4,000	2,000	-
5Ø, 9L	A, (P)	250, (200)	4,000	1,500	7,000
5Ø, 9.5L	A	200	4,000	1,500	-
5Ø, 10L	A	200	4,000	1,000	4,500
5Ø, 10.5L	A	200	3,000	1,000	-
5Ø, 11L	A	200	3,000	1,000	-
5Ø, 11.5L	A	-	-	-	-
5Ø, 12L	A	180	2,500	1,000	-

